



Making Space for Nature in Kent and Medway

Developing the County's Local Nature Recovery Strategy



Kent Downs
National
Landscape



Kent LNRS Launch

- Collaborative opportunities
- Collaboration necessity

Nick Johannsen FLI

PART OF THE
GLOBAL



CROSS-CHANNEL
GEOPARK





IUCN Cat V. Protected Landscapes

- National Landscapes and National Parks
- Cover 25% England
- 50% of SSSIs
- Cat V. '...should represent an integral balance between people and nature' (IUCN)
- Key role in Nature Recovery/
Nature's Resilience

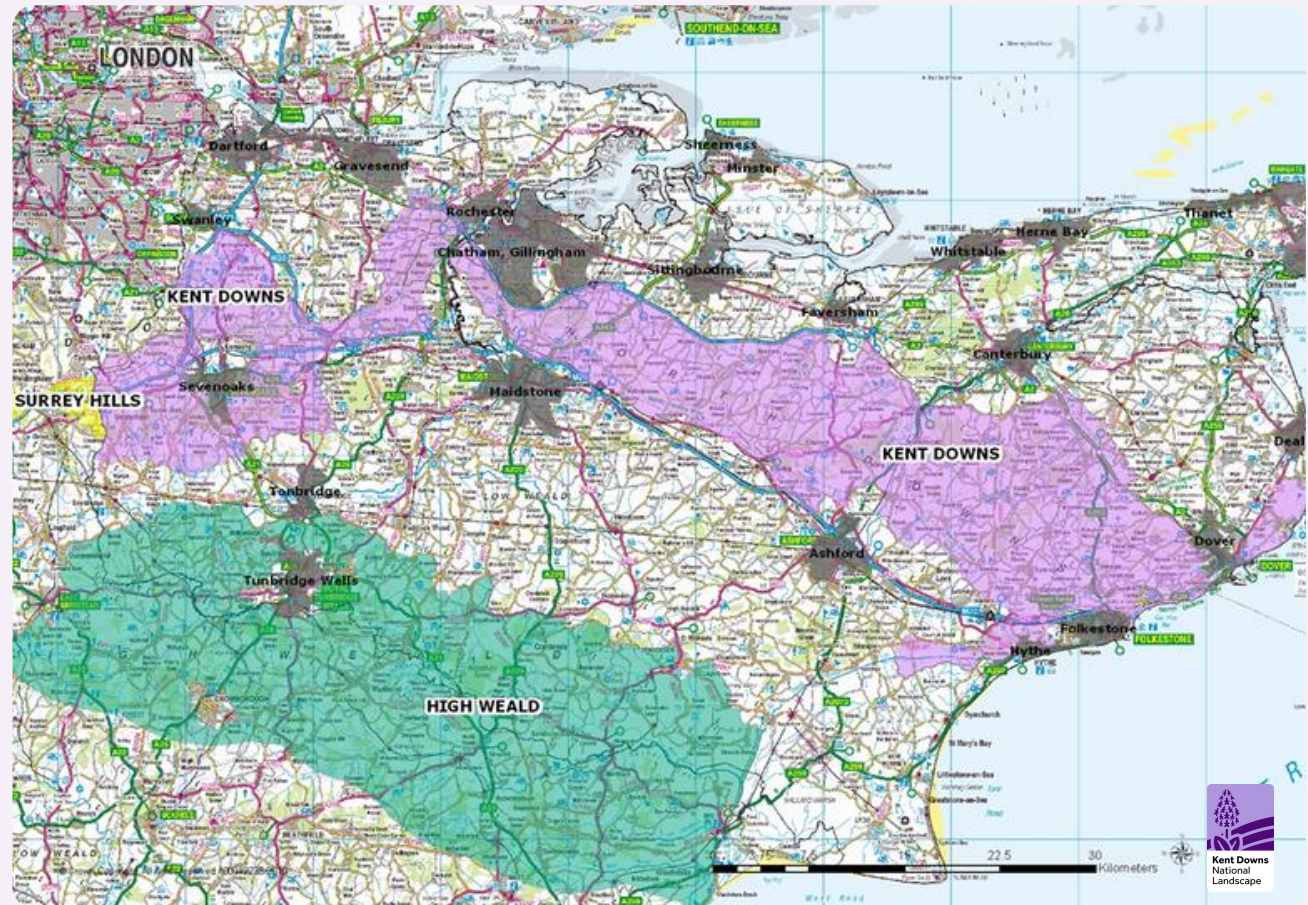




Kent Downs
National
Landscape

Kent Downs National Landscape

- Covering 25% of county of Kent
 $\frac{1}{3}$ including The High Weald.
- Farming around 70% of the Kent Downs
- woodland 23%
- Well over 1m people within 1 km
- Only National Landscape in Greater London





Kent Downs
National
Landscape

The Standing
Committee
on National
Parks, 1938

‘The Government is engaged on a Health Campaign...but it is no less essential, for any national health scheme, to preserve for the nation **walking grounds and regions where young and old can enjoy the sight of unspoilt nature.**

And it is not a question of physical exercise only, it is a question of spiritual exercise and enjoyment.’



‘The protection of landscape beauty and the encouragement of open-air recreation...will be a great national investment, yielding unlimited returns in health and happiness’

Report of the National Parks Committee chaired by Sir Arthur Hobhouse, 1947



The purpose

To conserve and enhance the natural beauty of the landscape...expected additional purposes for nature and access

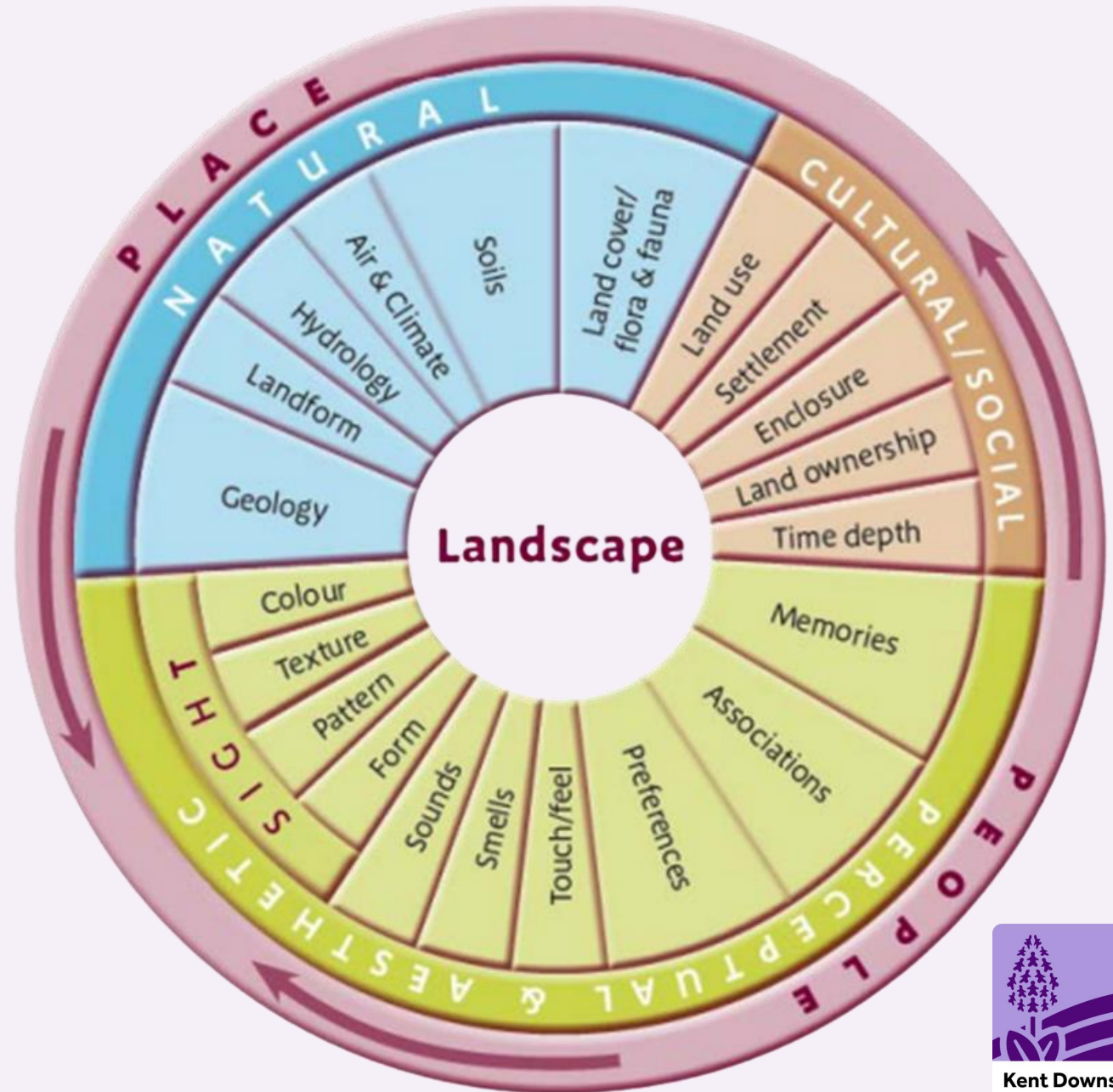
‘Natural beauty is not just the look of the landscape, but includes landform and geology, **plants and animals**, landscape features and the rich history of human settlement over the centuries.’



- All public bodies and statutory undertakers
- **‘Must seek to further’ purpose**
- We ‘must’ collaborate (by law)! LURA

Landscape

- It's not just what you see...
- **Nature an important part**
- Landscape approach not well understood





Kent Downs
National
Landscape





Kent Downs
National
Landscape





Kent Downs
National
Landscape





Kent Downs
National
Landscape





Kent Downs
National
Landscape

Some pictures now

Lots of words...

Words (can)
matter...



Lots of words...Words (should) matter

- **'...Legally binding target to halt species decline by 2030.'**
- **'...By 2030, at least 30% of land and sea is effectively managed and conserved, and nature is recovering beyond these places.'** National Landscapes the 'backbone'.

NE Strategy 2025



By
2030



Lots of words...Words (should) matter

- Working with National Parks and National Landscapes to define **clear pathways to nature recovery**...(NE strategy)
- ‘....Protected Landscapes are **essential to nature’s recovery**’ (Minister Creagh).



Natural England's
Strategy
2025/ Minister
Creagh
statement



10 Targets for Protected Landscapes; for nature, climate, people and place.

UK Government 2024

5 of the 10 targets are for nature

Targets for the Landscape not for the Kent Downs Team...we must collaborate.



Government Targets
and Outcomes
Framework for
Protected Landscapes



Target 1 (Nature)

Restore or create more than 250,000 hectares of a range of wildlife-rich habitats within Protected Landscapes, outside protected sites by 2042

That's nearly 70Km² in Kent Downs

- Tree and woodland canopy 27km²
- Restore existing potential 30Km²
- New habitat 13 Km²



By
2042



Target 2 (Nature)

Bring 80% of SSSIs within Protected Landscapes into favourable condition by 2042.

That's additional 8km² in the Kent Downs in favourable condition

And/ or 55 SSSI special features (eg rare species or threatened habitats)



By
2042



Kent Downs
National
Landscape

Target 3 (Nature)

For 60% of SSSIs within Protected Landscapes assessed as having 'actions on track' to achieve favourable condition by **31 January 2028**.

Kent Downs currently 28%

Additional 32% in 2 years



By
2042

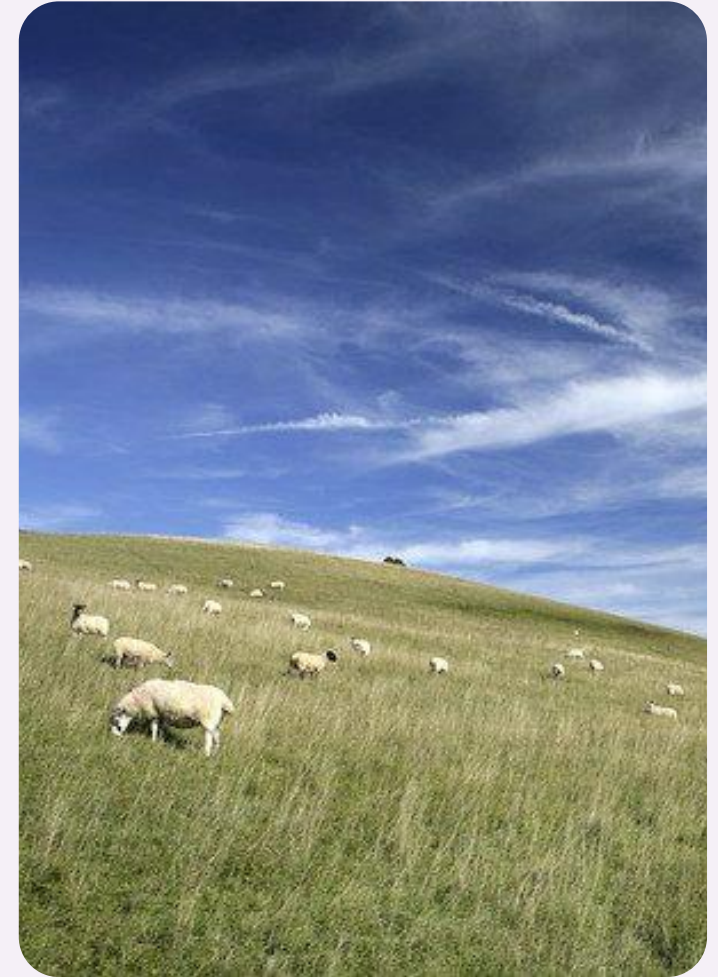


Kent Downs
National
Landscape

Target 4 (Nature)

Continuing favourable management of all existing priority habitat already in favourable condition outside of SSSIs (from a 2022 baseline) and increasing to include all newly restored or created habitat through agri-environment schemes by 2042.

Still awaiting further information



By
2042



Kent Downs
National
Landscape

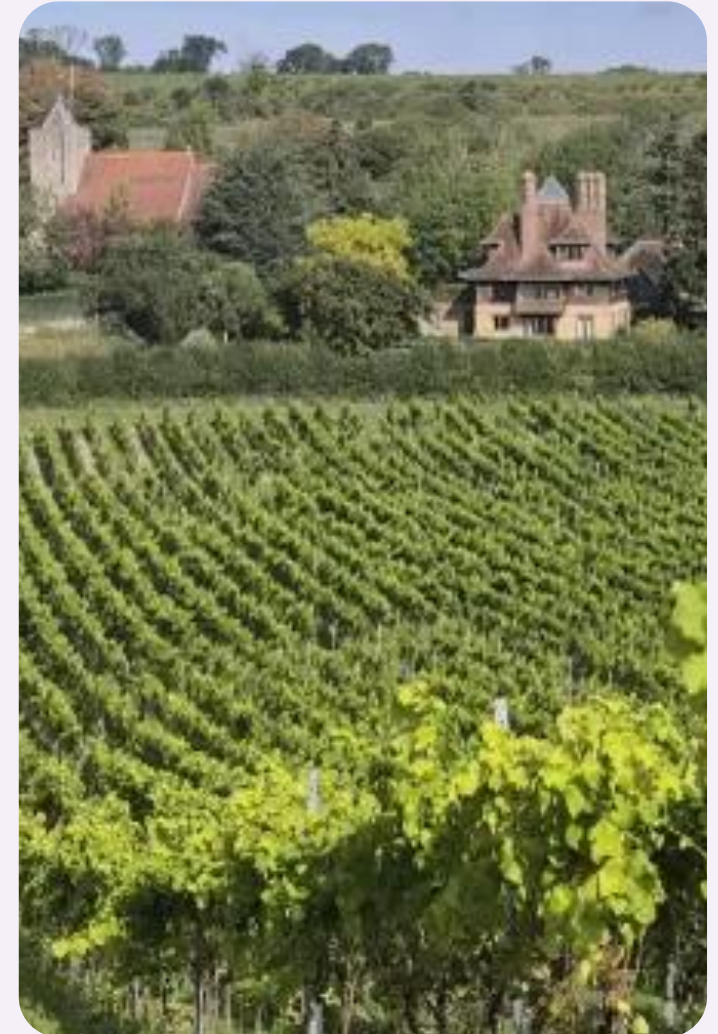
Target 5 (Nature)

Ensuring at least 65% to 80% of land managers adopt nature friendly farming on at least 10% to 15% of their land by 2030.

Using Agri-Environment as proxy

By area 66% (phew)

By owner 28% (err?)



By
2042



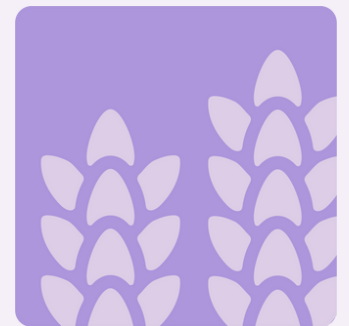


Kent Downs
National
Landscape

Lots of words...

Lots to do...

We're making a start





Making Space for Nature in Kent and Medway

Developing the County's Local Nature Recovery Strategy

Statutory review of the Kent Downs Management Plan

The LNRS is
planned to be the
'nature bit'.



Let's Talk Kent



Kent Downs
National
Landscape

Home / Shaping the Kent Downs together

Shaping the Kent Downs together

**Have your say on the future of this
special place!**

We, the Kent Downs National Landscape Team, are updating the Management Plan for the Kent Downs National Landscape - a designated Area of Outstanding Natural Beauty (AONB).

This important plan sets out how we will care for, manage, and enhance the Kent Downs National



Kent Downs
National
Landscape

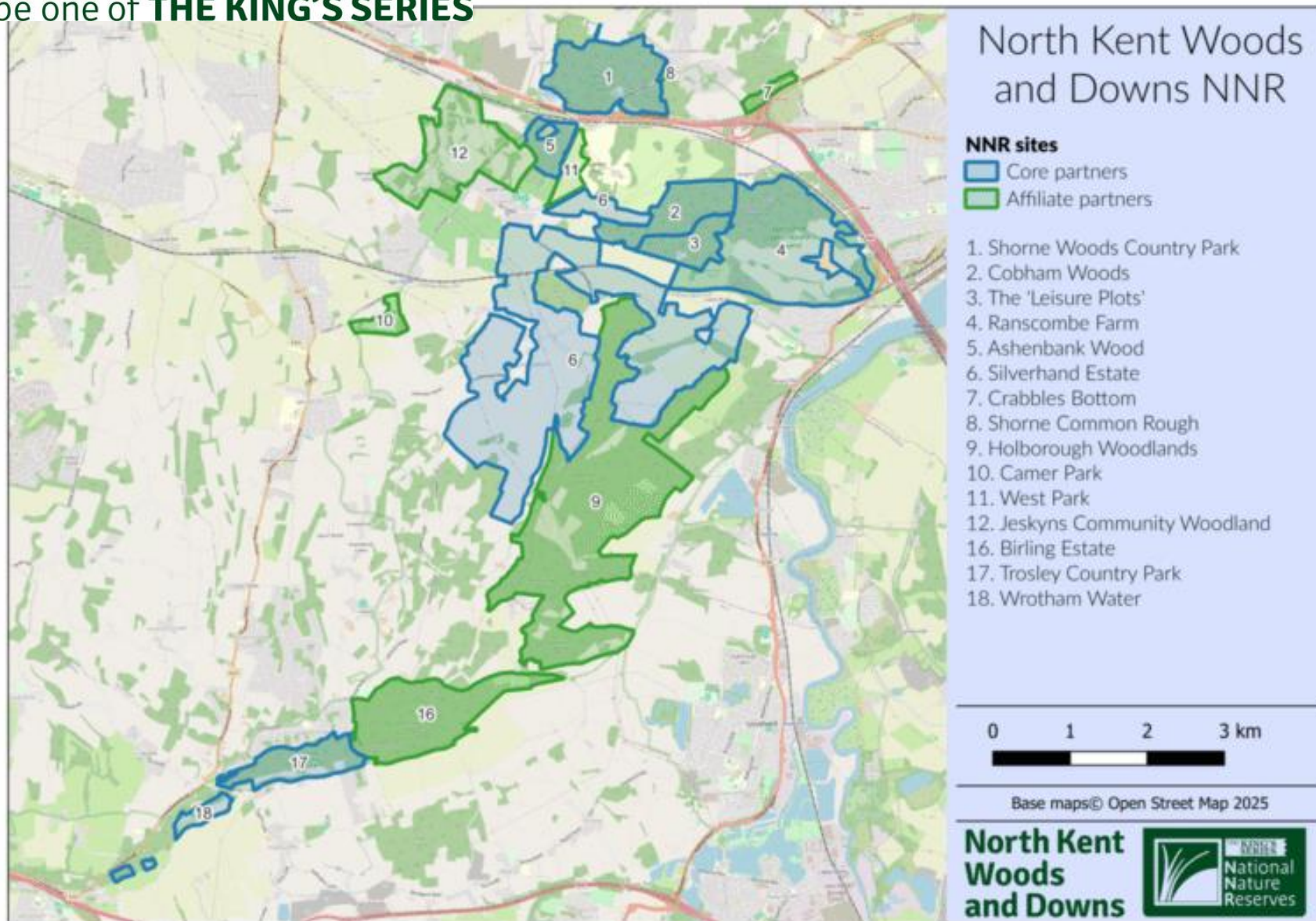




North Kent Woods and Downs



Proud to be one of **THE KING'S SERIES**



North Kent Woods and Downs



Proud to be one of **THE KING'S SERIES**



North Kent Woods and Downs



Proud to be one of **THE KING'S SERIES**

- Birling Estate
- Forestry England
- Gravesham Borough Council
- Kent County Council
- Kent Downs National Landscape
- National Trust
- Natural England
- Medway Council and Plantlife
- Shorne Parish Council
- Tarmac
- The Woodland Trust
- Vineyard Farms Ltd
- West Kent Downs Countryside Trust

Supported by
National Highways



Brought to you by: **Nature**
Cared for by: **All**

nkwdnnr.org.uk

North Kent Woods and Downs



Proud to be one of **THE KING'S SERIES**



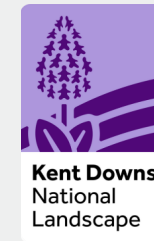




What is UNESCO Global Geopark?

Single, unified geographical areas of international geological significance,

Bottom-up approach to conservation and sustainable development just like a National Landscape.



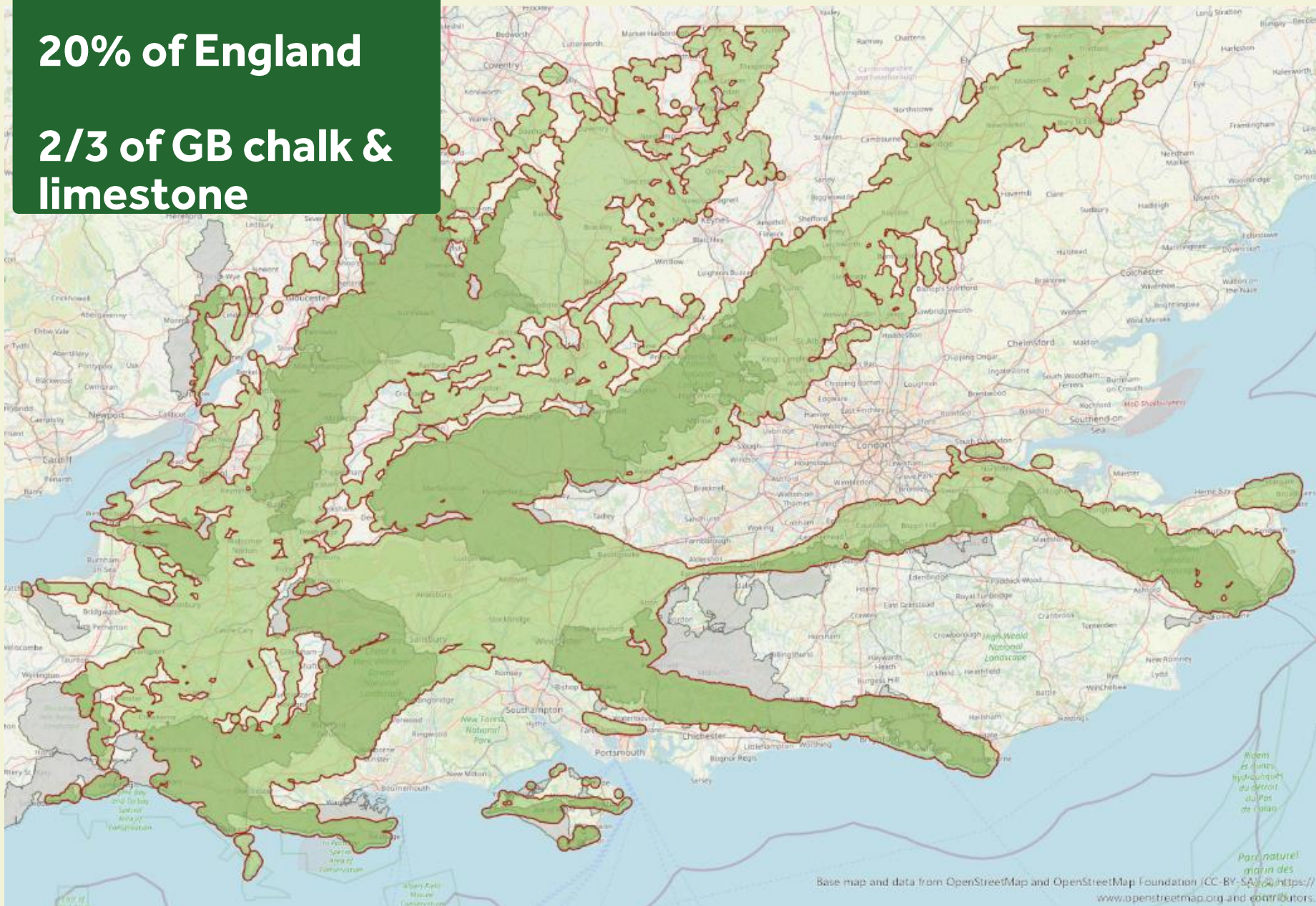
The UNESCO brand supports

- Sustainable tourism; Local pride
- New partnerships and resources
- Nous devons collaborer !

Big Chalk

20% of England

2/3 of GB chalk & limestone



Bioregional Nature Recovery Collaboration

> 150 partners

28/ 48 LNRS partnerships

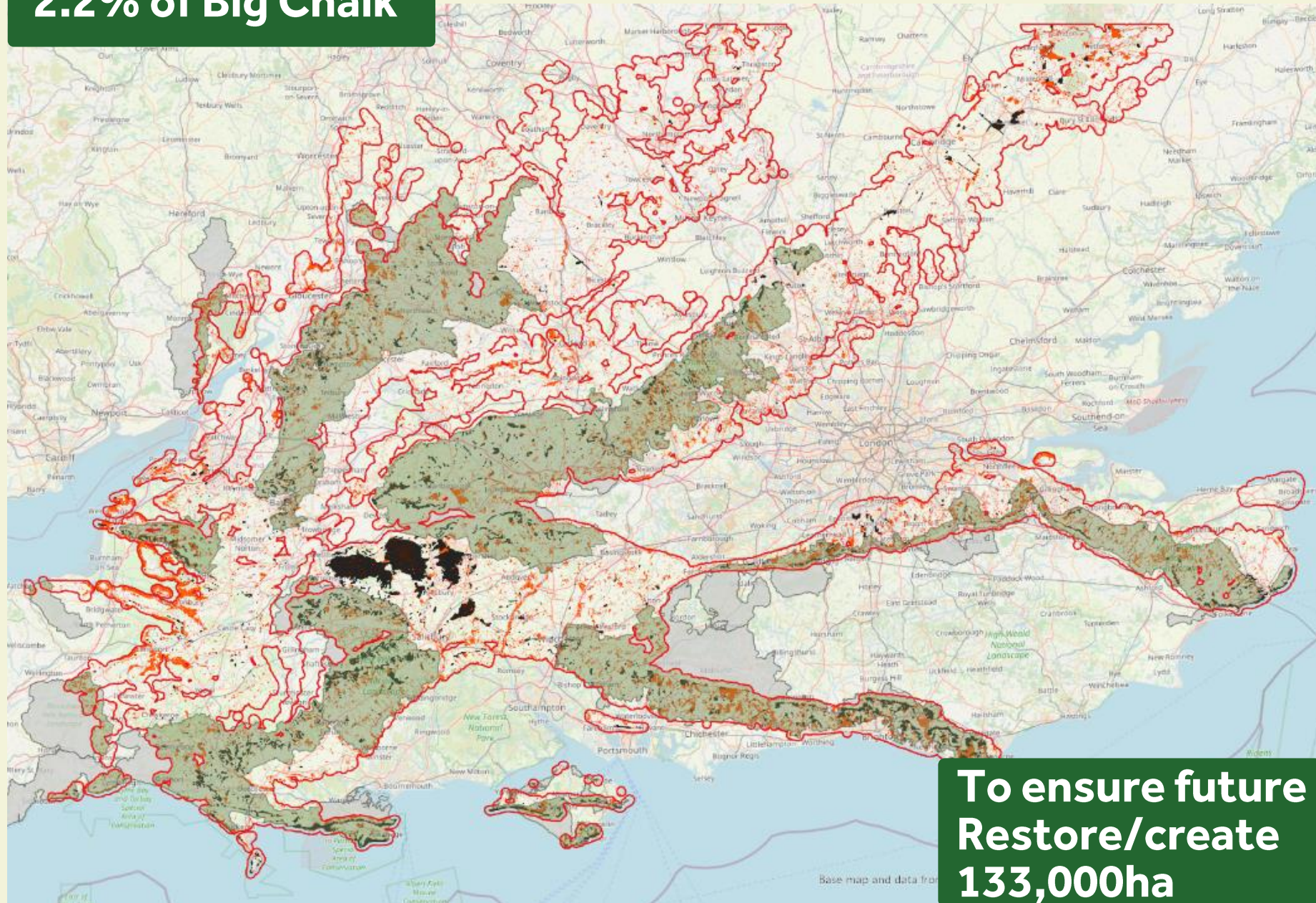
Vision: create nature-rich chalk and limestone landscapes that benefit all of us

Mission: collectively secure the future of nature in southern England's iconic chalk and limestone landscapes by.

Doing together what we cannot do alone



Chalk Grassland 2.2% of Big Chalk

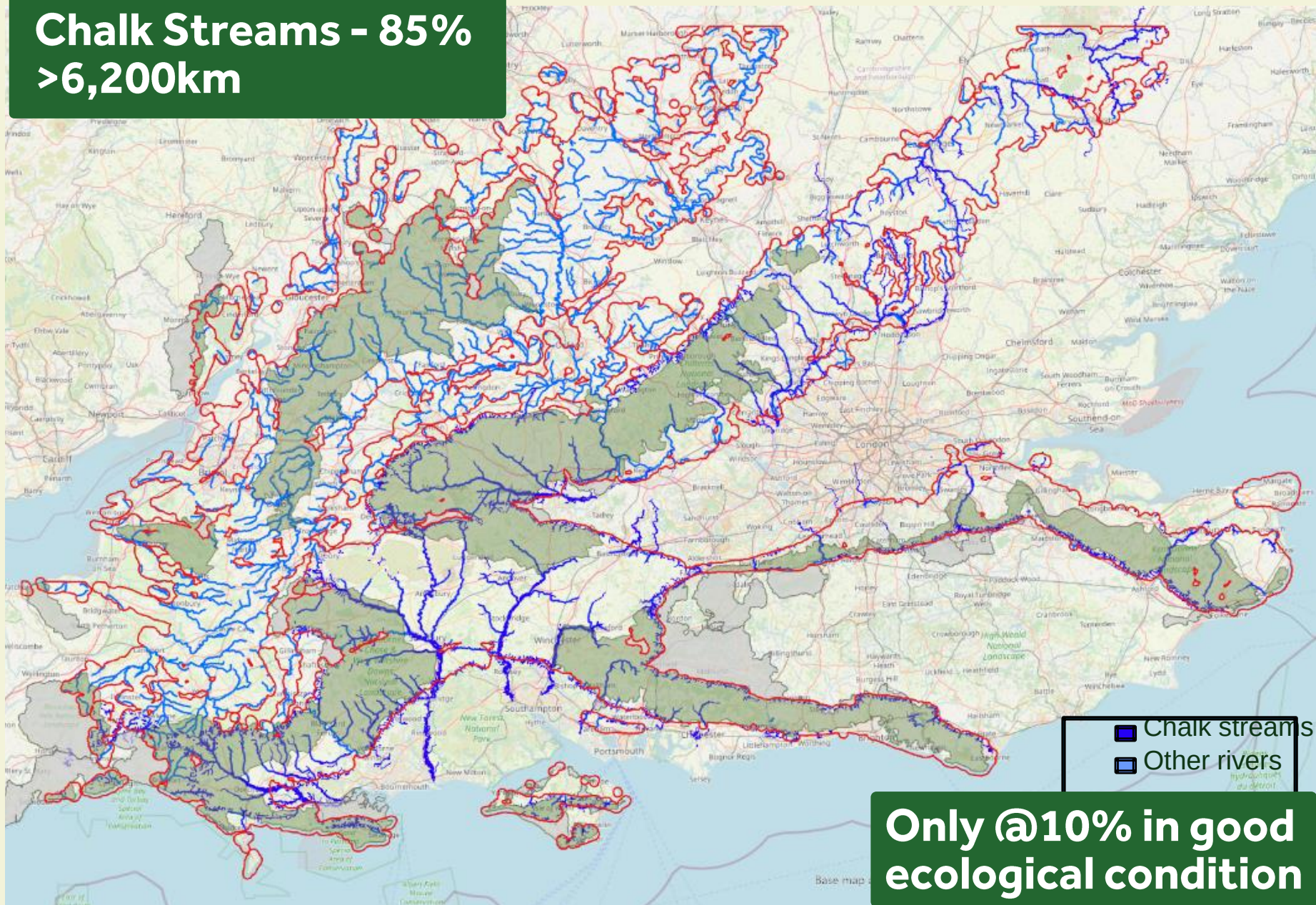


To ensure future
Restore/create
133,000ha

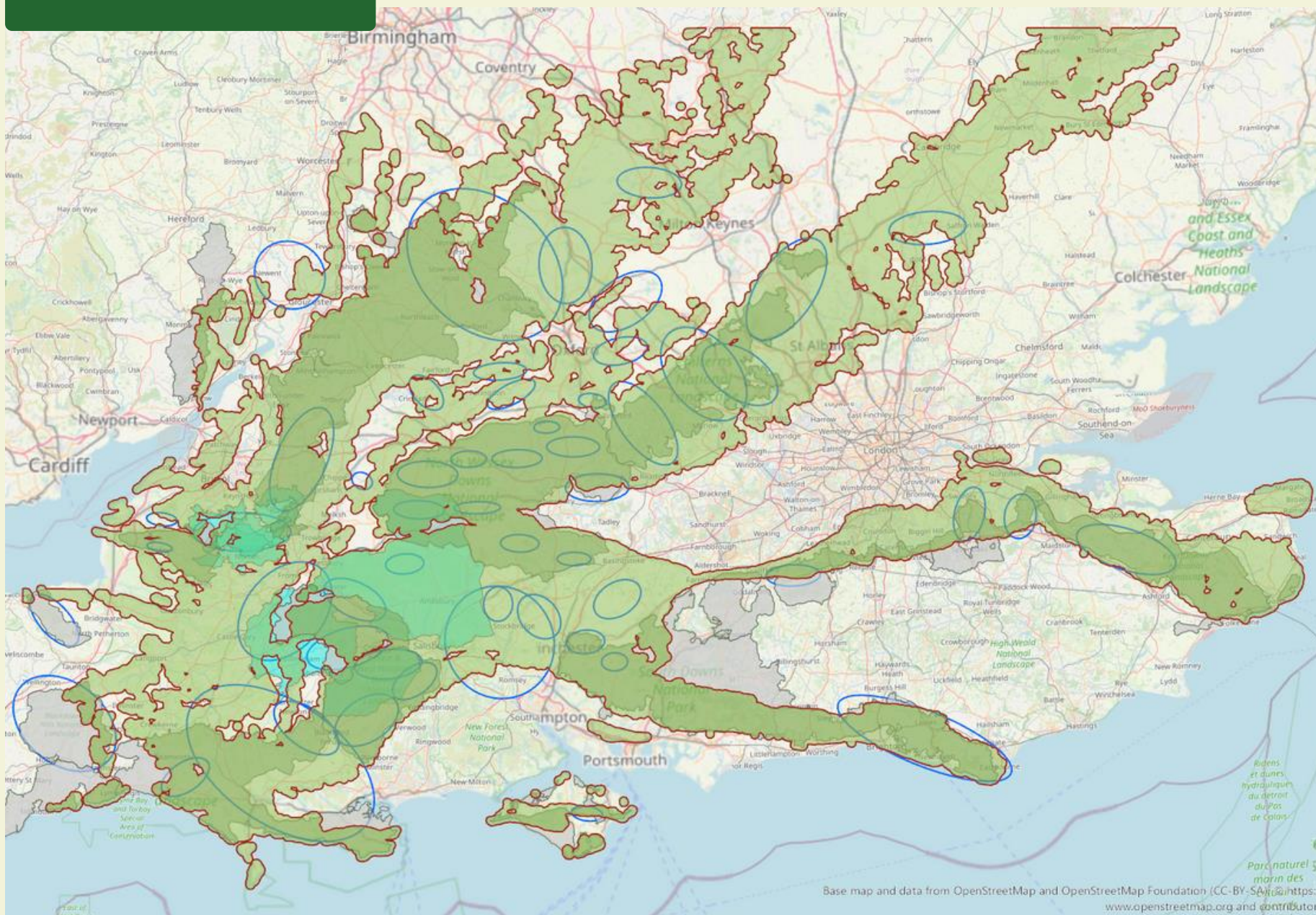


Rivers
Chalk Streams - 85%
>6,200km

**Big
Chalk**



Farm Clusters



“True transformation happens when we think big—when we plan and act across landscapes and organisational boundaries... collaborative action across multiple stakeholders... is what truly drives change...”

...and we need to work at every scale







Making Space for Nature in Kent and Medway

Developing the County's Local Nature Recovery Strategy



Kent Downs
National
Landscape



PART OF THE
CROSS-CHANNEL
GEO PARK
TRANSMANCHE



Parc
naturel
régional
des Caps et
Marais d'Opale



**Let's
collaborate!**

